

Castle Green Walk
Bridgwater
TA6 5FN







£259,700

- Modern Mid-Terraced Property
- Arranged Over Three Storeys
 - Three Double Bedrooms
 - Two Bathrooms
- Open-Plan Lounge/Diner
 - Fitted Kitchen
- Ground Floor Cloakroom
 - Garage & Driveway
 - EPC Rating:
 - Council Tax Band:

Positioned within a modern family-oriented development, just a stone's throw away from the heart of Bridgwater, lies this roomy three-bedroom townhouse. Complete with a garage (located under a coach house) and parking space, this property offers both convenience and comfort.

ACCOMMODATION

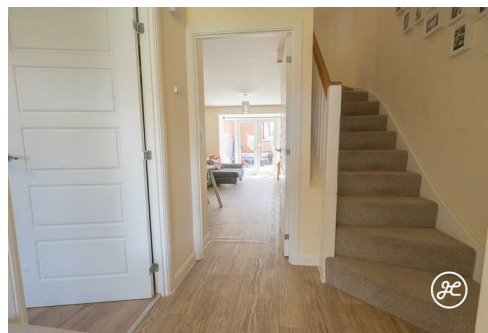
This UPVC double glazed and gas centrally heated property briefly comprises; an entrance hall, cloakroom, kitchen, and lounge/diner to the ground floor. Arranged on the first floor are two bedrooms and a bathroom. Located on the second floor is an impressive master bedroom with en-suite shower room and dressing area.

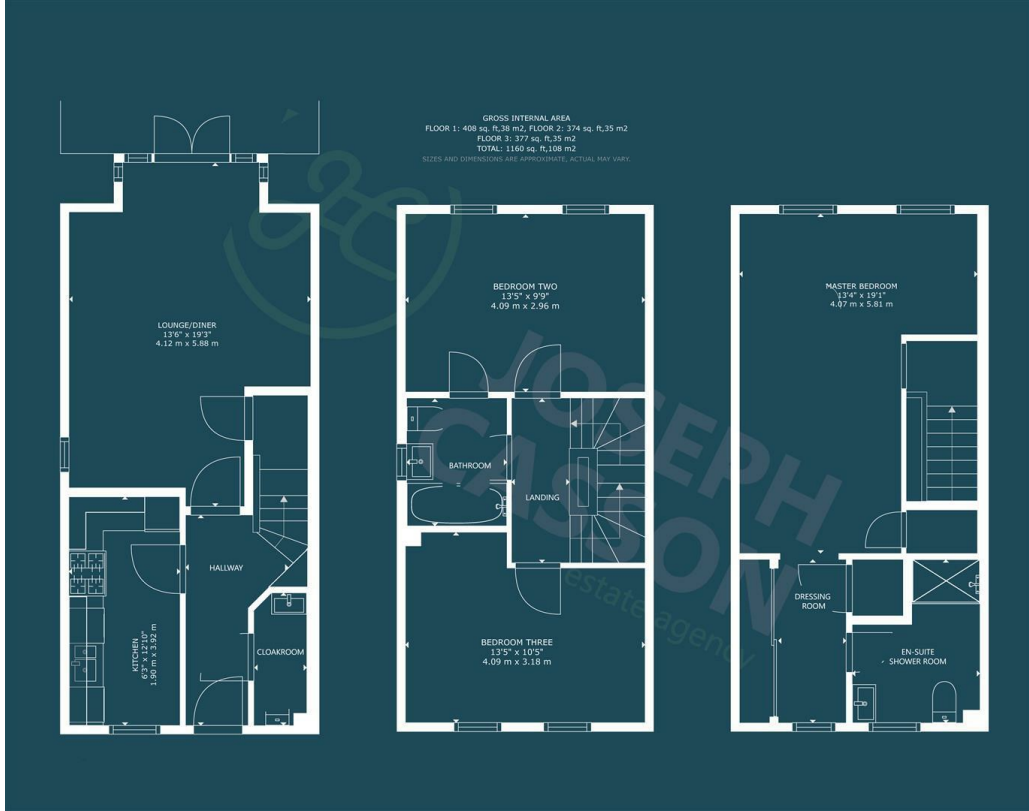
Externally, there is a low-maintenance, landscaped rear garden with rear access which leads directly onto the parking and garage.

TENURE: Freehold + Leasehold garage.

LOCATION

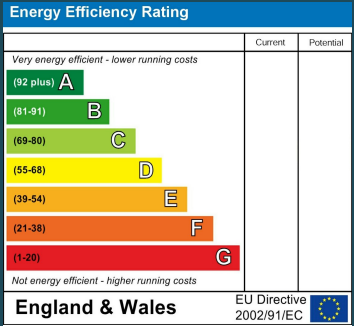
Situated close to the centre of the market town of Bridgwater, this property is ideally positioned with excellent access to a full range of amenities including educational, retail and leisure facilities. Junctions 23 & 24 of the M5 are also nearby as is Bridgwater Railway Station.





Council Tax Band

C



Agents Note: Whilst every care has been taken to prepare these particulars, they are for guidance purposes only. All measurements are approximate and are for general guidance purposes only and whilst every care has been taken to ensure their accuracy, they should not be relied upon and potential buyers/tenants are advised to recheck the measurements



Joseph Casson Estate Agency -
Bridgwater
1 Friarn Lawn
Bridgwater
Somerset
TA6 3LL

Contact
01278258005
office@josephcasson.co.uk
www.josephcasson.co.uk



JOSEPH CASSON

the estate agency your home deserves